



Simplifying complex 3D data with greater speed and accuracy

Pointerra3D is a cloud-based geospatial SaaS platform that transforms how you manage and analyze data.

Designed for speed, scale, and collaboration, Pointerra3D creates accurate digital twin replicas of the physical world, enabling actionable insights, risk assessment, and compliance.

With always-on accessibility and unmatched performance, it empowers teams and stakeholders to achieve more while reducing operating costs.



Streamline workflows



Optimize outputs



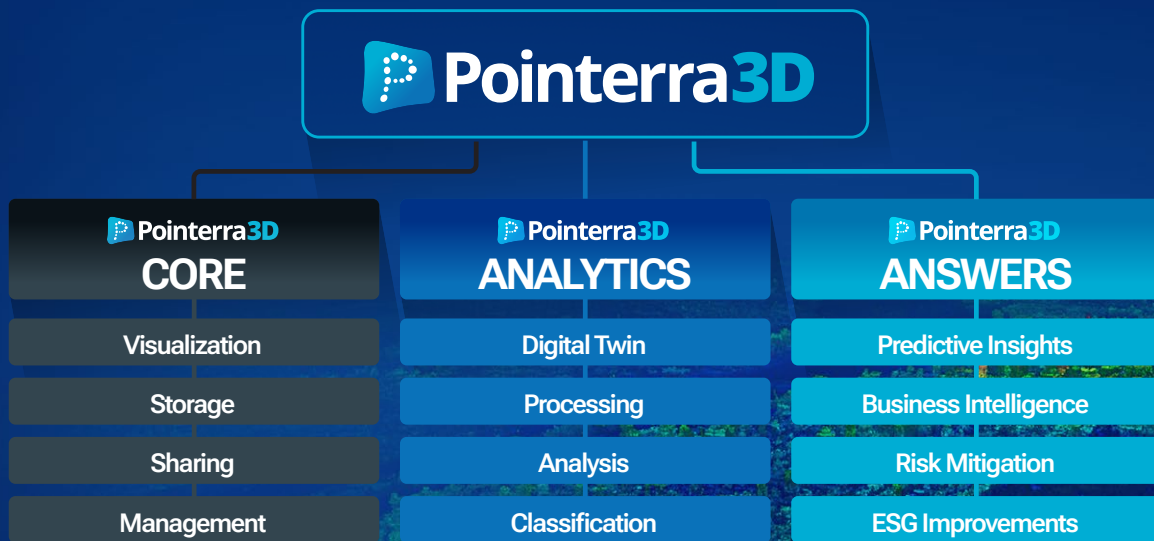
Empower teams



Boost profit margins

Three tiers, one powerful platform

Choose your stack, or scale up as needed



Solutions tailored for each sector

- Pointerra build connected applications to Pointerra3D Core enabling specific industries to extract the insight critical to them.
- Whether your industry is electric utilities, facilities management or transport we build tailored 'exploring' platforms to view multi-epoch data, change over time and do more with the analytical results.



Empowering every role: from the field to the C-Suite

Pointerra's platform empowers teams at every level to achieve more with less effort. These are just some of the roles that benefit—there's no limit to who can harness the power of Pointerra3D.

Field Technicians

Data Analysts

Surveyors

Project Managers

GIS Specialists

Safety Managers

Operations Managers

Compliance Officers

Executive team

Asset Owners

Engineers

Stakeholders & Clients



Every data need covered

A unified platform for storing, visualizing and processing data

Pointerra isn't just a platform for storing and viewing data—it's a comprehensive toolkit for processing, refining, and extracting insights from your datasets. With advanced

capabilities integrated directly into the platform, users can calibrate their point cloud data, perform classification, feature extraction, and photogrammetric processing.



Whether it's streamlining your data management and delivery workflows or building an integrated digital twin to drive asset management outcomes, Pointerra3D has you covered.

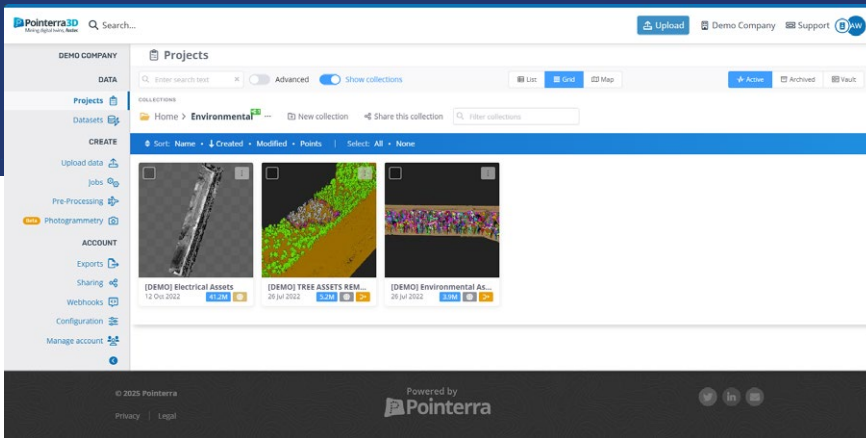


Single source of truth

Centralize and analyze geospatial data.

Pointerra3D enables the consolidation and unification of comprehensive 3D and 2D location data sources into a single data management, viewing and analysis environment

allowing for easy and always-on access from anywhere. The platform is built natively on Amazon Web Services (AWS) and deployable immediately from any web browser.



No more data silos or technical barriers. Anyone can access from the web

Scalable, secure, and connected

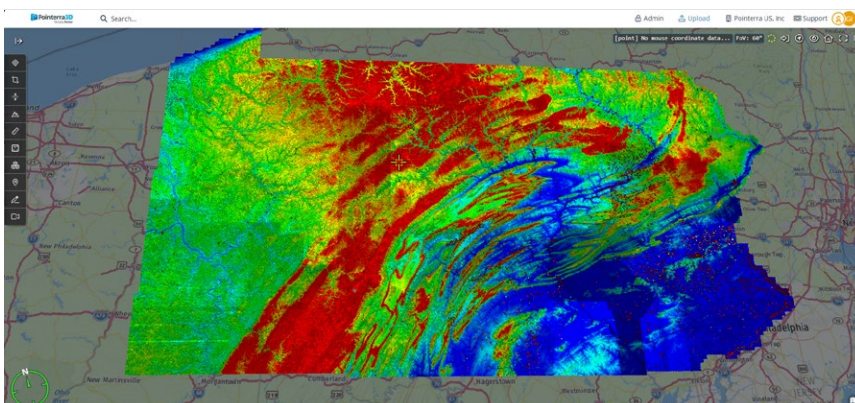


Pointerra3D is an immediately deployable SaaS solution that incorporates Single Sign-On, multi-factor authentication, industry-certified encryption and OAuth across of connected applications.

We conduct routine third-party cybersecurity penetration testing ensuring the latest vulnerability models are applied on each test.

Pointerra3D is a certified AWS Qualified Software partner and is available for direct purchase on the AWS Marketplace.

What's more, we support a wide range of industry formats and integrations.



Pennsylvania Statewide full-resolution LiDAR in a single web view.



More efficient workflows

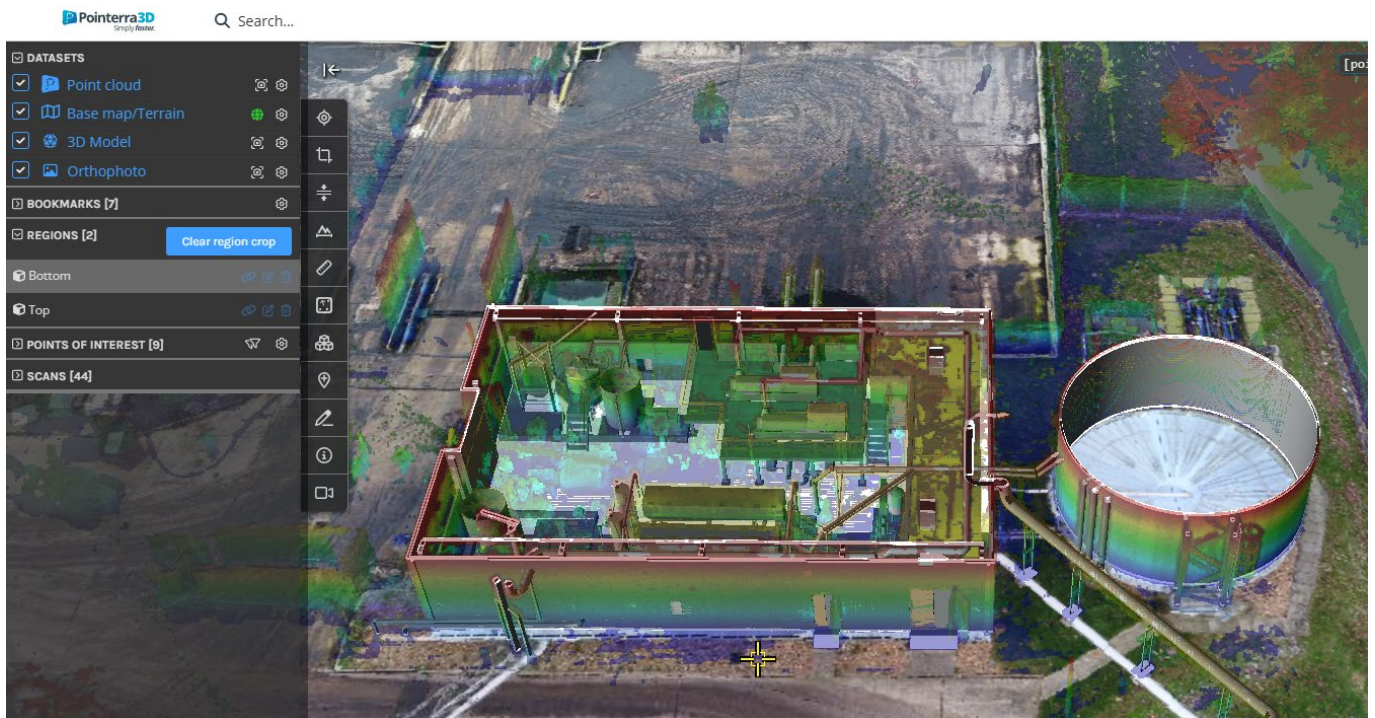
Convert desktop to cloud - reduce complexity & overheads

The majority of geospatial workflows are conducted on fragmented desktop apps, limiting speed of throughput, limiting scale for large workloads, limiting access to all but a few and often

downgrading the value of the data by generating filtered or subset results. Pointerra3D solves all of these challenges effortlessly, all the while reducing overheads of operating multiple subscriptions.

Unparalleled speed, scale and smarts

Pointerra3D leverages the entire AWS compute ecosystem to provide our customers unparalleled ability to build 3D and 2D datasets into unified viewing environments and analyze them across massive geographic regions that no other solution offers.



Unify point clouds, 3D models, orthophotos, base maps and more into one single web accessible view.



Actionable insights

Definitive answers on-demand

Pointerra3D Analytics are driven by our customers' demands to answer complex questions about their assets. Whether it's determining risk on a long linear asset or a single

construction site Pointerra3D offers an end-to-end 3D data analytics workflow to ensure accuracy, efficiency, availability and cost-savings on all your projects.

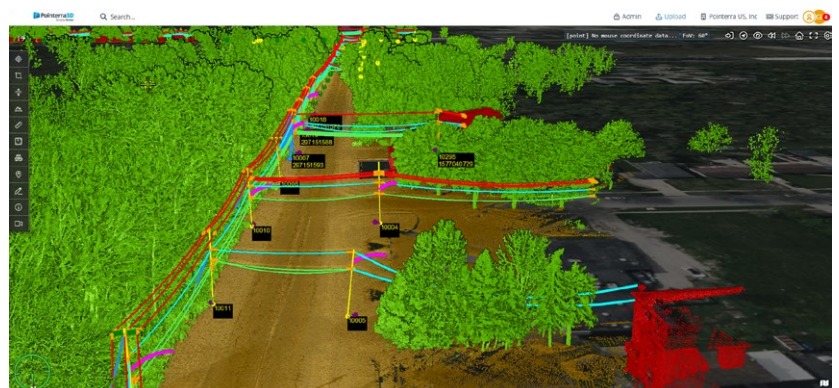
Select Analytic Type

Classification	Feature Extraction	Change Analysis	Mining	Conformance
Auto Classification	Poles and Wires	Compare Layers	Haul Roads	Mesh Clash Detector
Ground Model Key Points	Tree Segmentation	*Classification Differencing	Rock Bolt Extraction	Surface Flatness Now
Noise Classification	*Roads Now		Tunnel Dimensioning	
Noise Filtering Now	Photo Feature Match Now			
*Line Volume Classifier				
*Shell Classifier Now				

Pointerra3D analytics solve complex 3D problems automatically, at scale and immediately ready for validation, QC and user enhancement in the 3D viewer.

Predictive analysis for risk management

Pointerra3D's predictive analytics empowers you to identify risks before they escalate. By leveraging advanced change-over-time analysis, you can detect subtle shifts in your assets or environment, such as wear, structural stress, or vegetation encroachment; allowing for proactive targeted action. With the ability to visualize and share these trends across teams and stakeholders, Pointerra3D ensures everyone stays aligned, reducing risk and enhancing safety while driving efficiency at every level.





Operational efficiency

Less site visits, downtime and risks

Maximizing Your ROI



Collaborate in real-time on the same data



Instantly Available in the Browser



Visualize All Data Types



View/Manage/QA entire programs in a single view



Process - classify and extract at scale



Share with you customers immediately



Accelerate Data Delivery



Detect change between your data sources

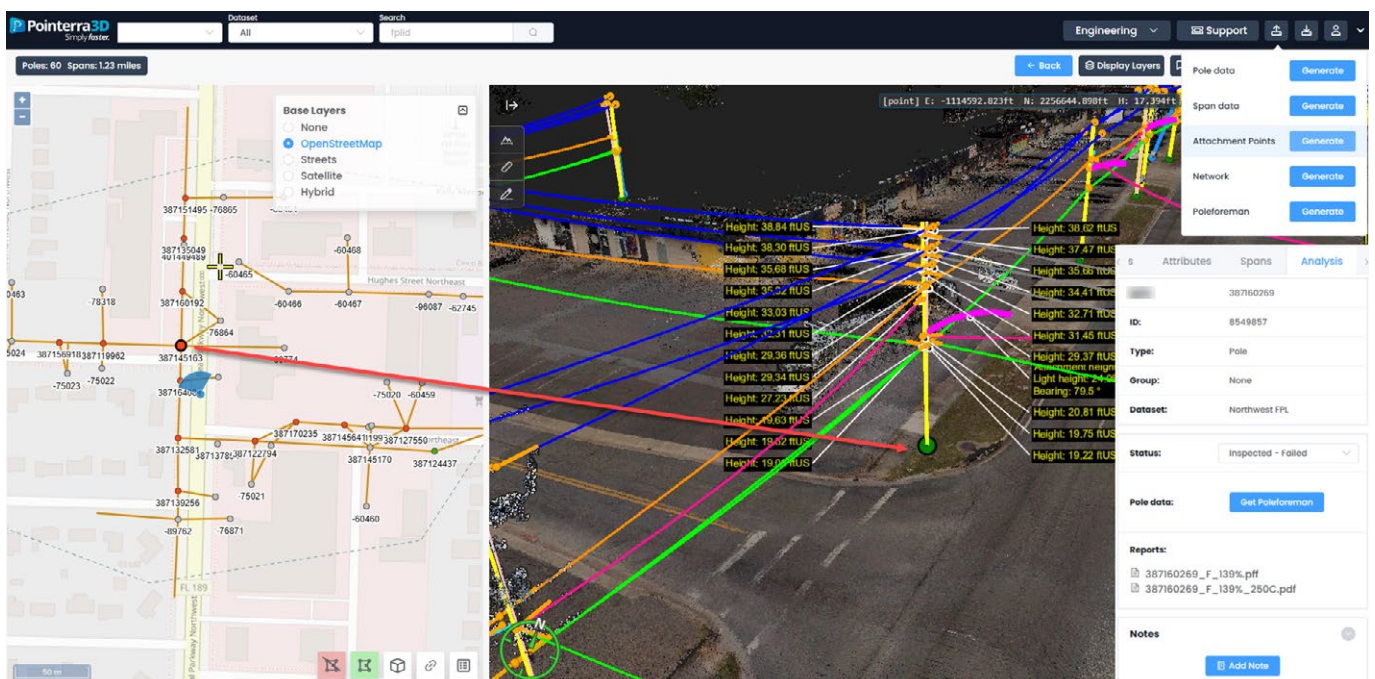
Unified data processing software

By negating the need for expensive and fragmented legacy desktop software, Pointerra enables significant cost savings while enhancing efficiency. This consolidated approach reduces overhead, accelerates workflows, and ensures your team gets the most value out of every dataset—driving operational excellence and boosting your bottom line.

LiDAR

Photogrammetry

Data Analytics



Keen to learn more? Contact us today to see how Pointerra can streamline your workflows and drive results!



+1-833-3DD-TWIN or +1-833-333-8946 | info@pointerra.com

pointerra.com

Simply faster.