



Mining, Oil & Gas

Manage ESG reporting with quantified analytics

Enable collaborative engineering and design

Automate analytics and KPI reporting

Assess Volumes and monitor earthwork

Create functional Digital Twins

Optimize extraction and site production



The Problem

Oil & Gas and Mining operations are complex assets to manage. Environmental responsibility and sustainability, workforce and community safety and wellbeing, and regulatory compliance are key challenges that every resource company must manage. There is a massive amount of data being collected from a wide range of sources for each operation. This data is often siloed and used for a single application and not democratized or available to other business units internally or to trusted external suppliers. With the majority of assets located in remote locations and increasingly being managed by offsite personnel it's critical to have a real time, integrated view of data to support faster, more informed decision making to improve production efficiency and safety.

The Solution

The key to overcoming these problems is creating a Digital Twin in a Common Data Environment where data can be visualised, analysed and shared across an operation in real time. The Digital Twin becomes the single source of truth, providing a virtual replica of the site that is connected to other critical business systems to encourage collaboration and supporting compliance, operational efficiency and productivity gains through advanced analytics.

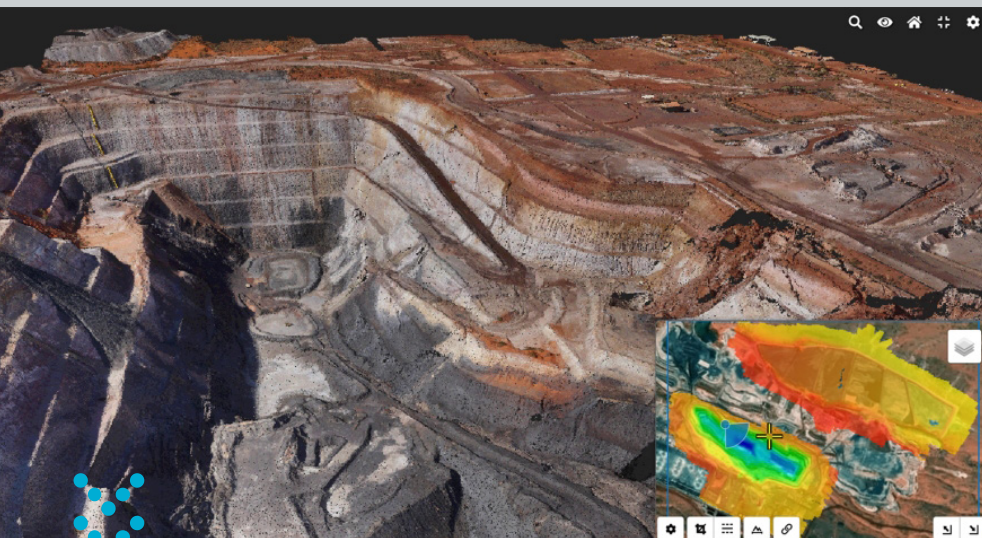
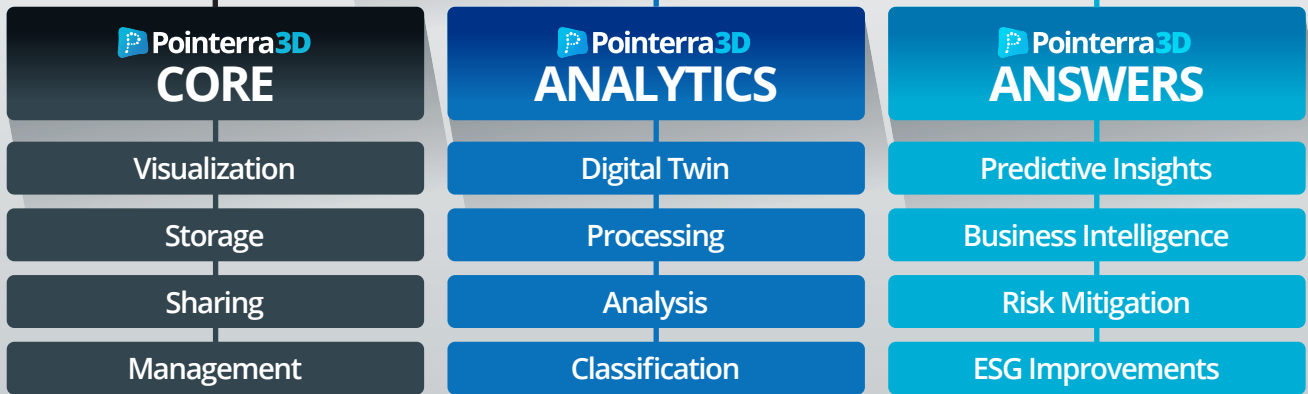


Pointerra3D's patented cloud technology enables you to efficiently manage your 3D data to improve operational productivity and ESG outcomes, while mitigating risks and costs throughout your operation.

Simply *faster.*

The **Pointerra3D** product has three components, each with a different suite of features and capabilities. Depending on the specific requirements of your company, we can offer the full stack of Core, Analytics and Answers or just the Core and Analytics bundle.

Pointerra3D



Use the full stack of **Pointerra3D** Core, Analytics and Answers to solve the challenges faced by Transport Authorities around the globe.

Pointerra3D Benefits

Maximizing Your ROI

- | | | |
|-----------------------------------|-------------------------------|--------------------------------|
| Create and Maintain Digital Twins | Exploit Full Data Values | ESG Improvements |
| Virtualize Inspections | Secure Data Assets | Shrink Workflows |
| Parameterize Risk | Predict Future Performance | Optimize OPEX & CAPEX |
| Visualize Performance | Real-Time Reliability Metrics | Remote Inspection & Management |