



Pointerra

Simply *faster*.

Mitigate Risk to
your Global
Operations

2022



What is needed to remove RISK?

There are several key risks to global operators of Oil and Gas facilities

- Access to specialized services globally
- Global visibility of your assets
- Ability to leverage a global service market
- Reduce flights to remote assets

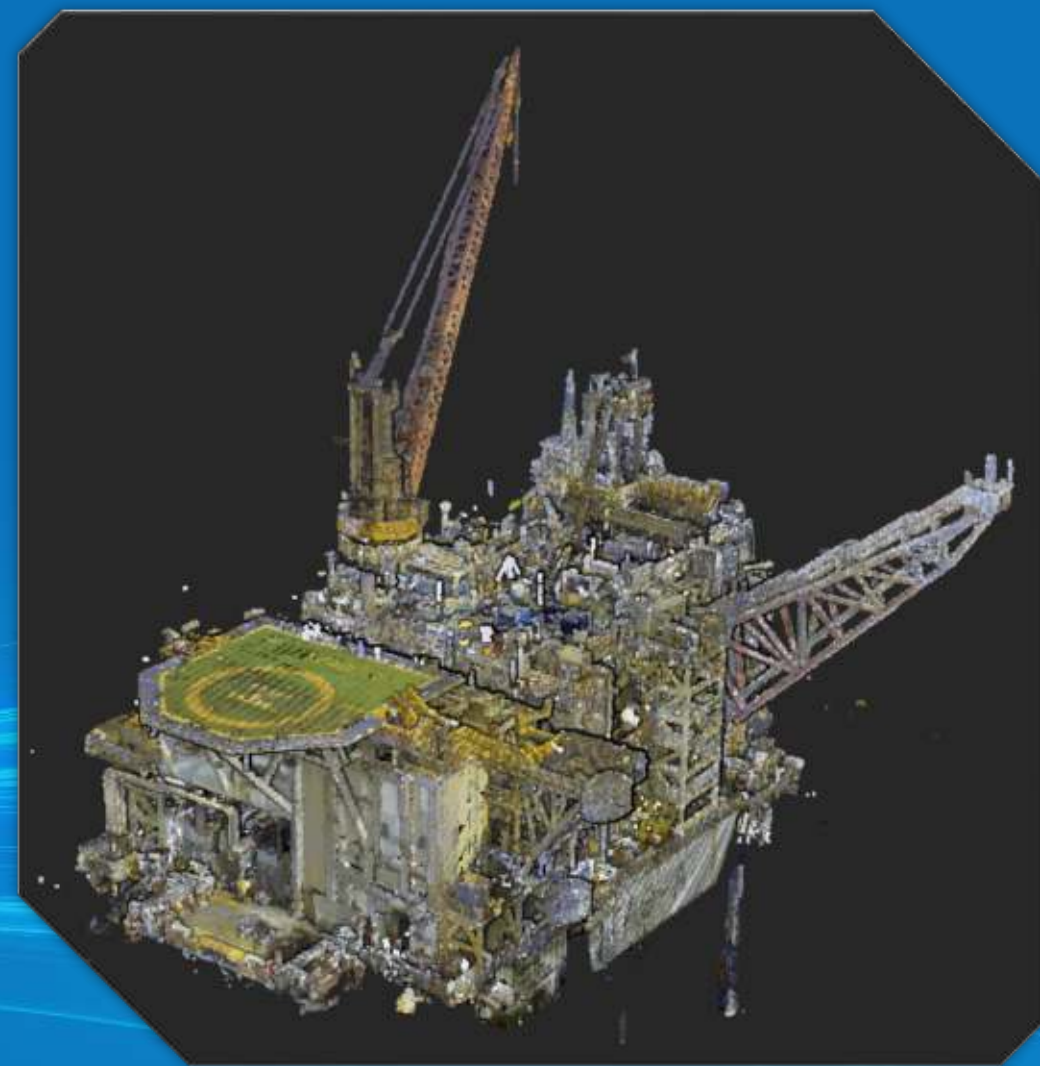
Simply ***faster.***

Problem Solved

But How?

Through the hosting 3D reality data in Pointerra3D

- Maintaining a common data environment and digital twin
- Easy access to big data
- Ease of access to complex data
- Fast sharing with contractors for tendering
- Collaborate with a wider team remotely
- Segment and download just what you need
- Ability to review proposed designs in the digital twin



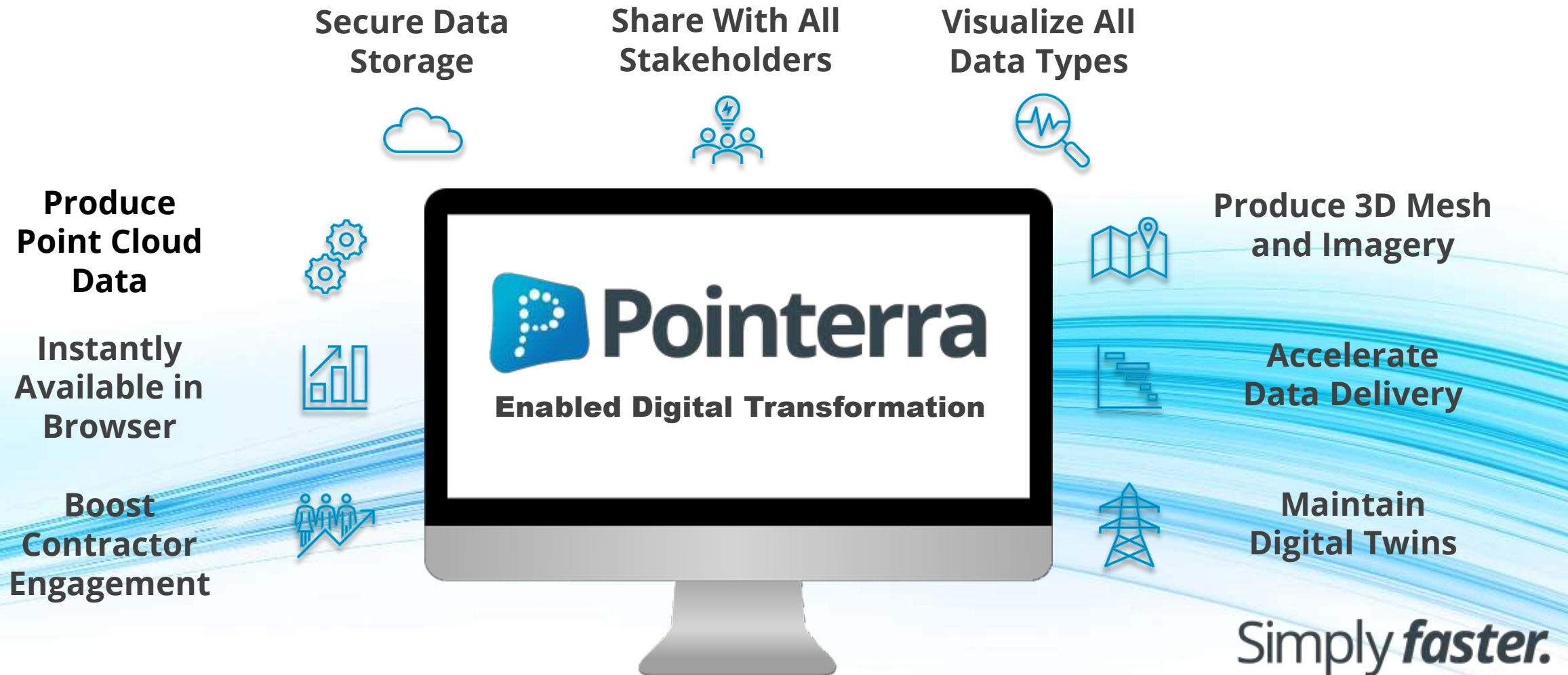
Simply ***faster.***



4

What does Pointerra Do?

- Pointerra is a cloud-based platform that creates, maintains and catalogues Geospatial Datasets, more specifically known as Digital Twins.





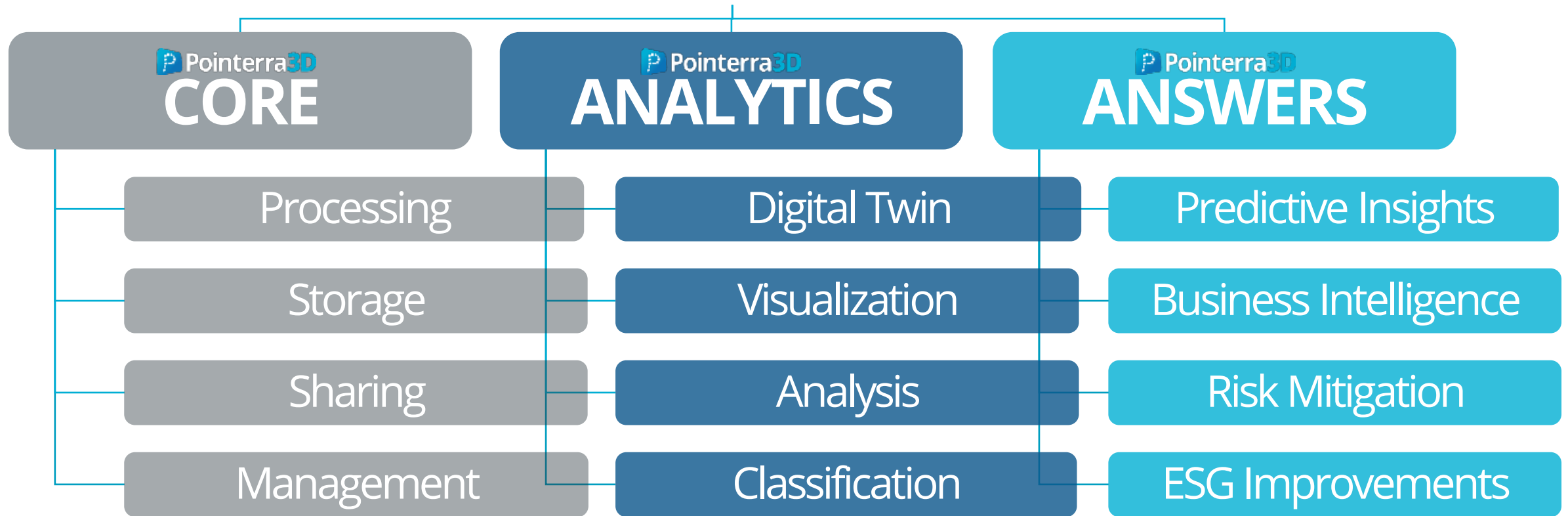
Pointerra's patented cloud-based technology and AI-driven algorithms bring a new standard of speed, smarts, scale and on demand access to the long-standing sector challenge of being able to rapidly convert massive 3D datasets into analytics and insights that provide definitive answers for physical asset management questions.

Simply ***faster.***

Simply ***faster.***



6 The product breakdown



Simply **faster.**



Pointerra3D



Pointerra3D ANSWERS delivers the predictive insights that enable definitive answers to physical asset management questions.

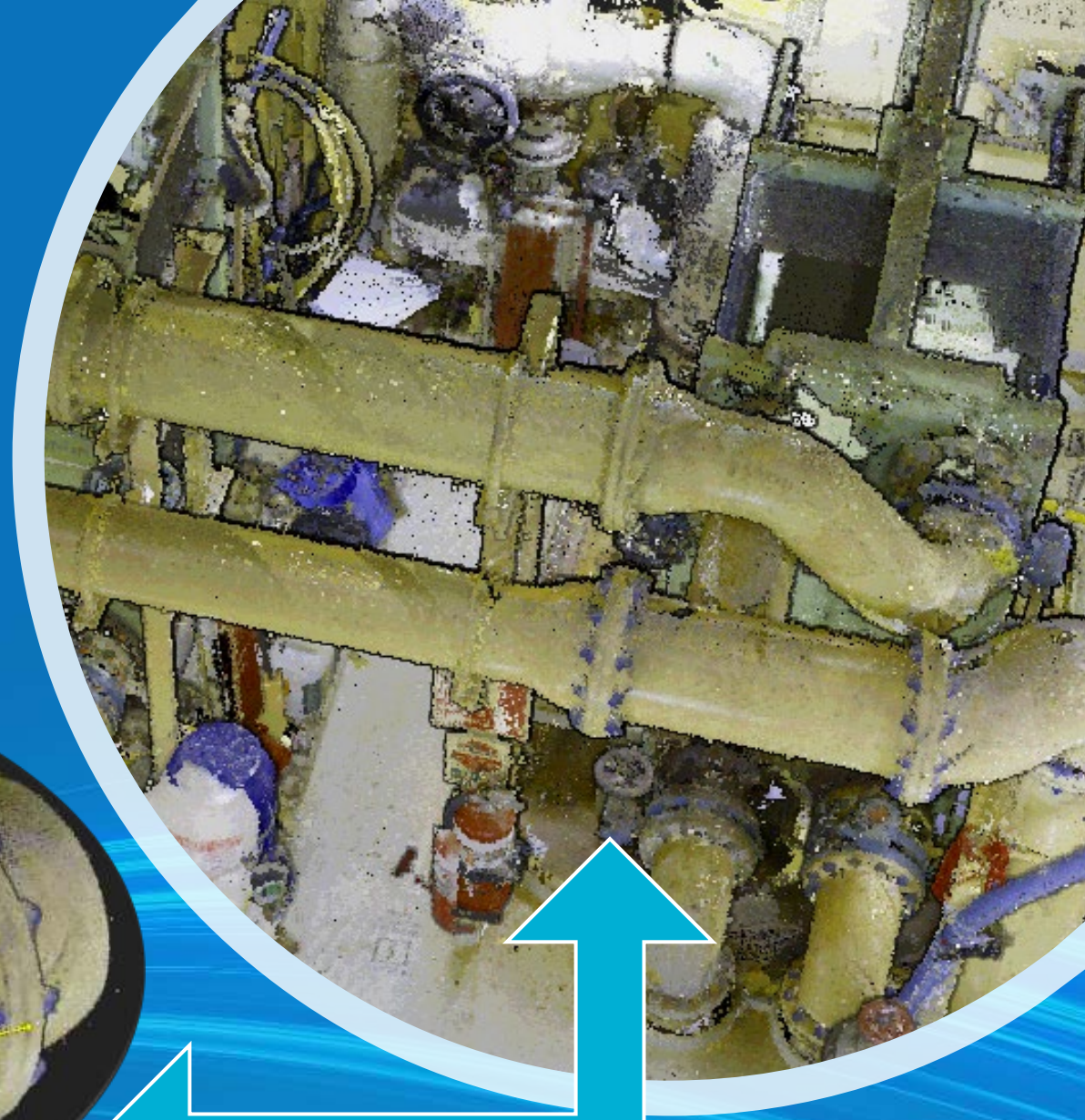
Pointerra3D ANALYTICS creates a digital twin to enable intelligent analysis of physical assets.

Pointerra3D CORE is the baseline platform access and 3D data workflow offering.

Simply *faster.*

See Just what you need to

- Navigate an entire site
- Easily identify just what you need
- Export or share with your team or contractors



Simply *faster.*

Define



Share just what you need to

- Through Pointerra3D, sectioning and sharing tools the right data can be in the hands of those who need it in minutes
- Design work can commence say day to the request
- Fabrication of replacement piping and structure is no longer delayed due to a need to re visit site for measurements
- Designs can be confirmed against the existing environment to create a first fit first time possibility

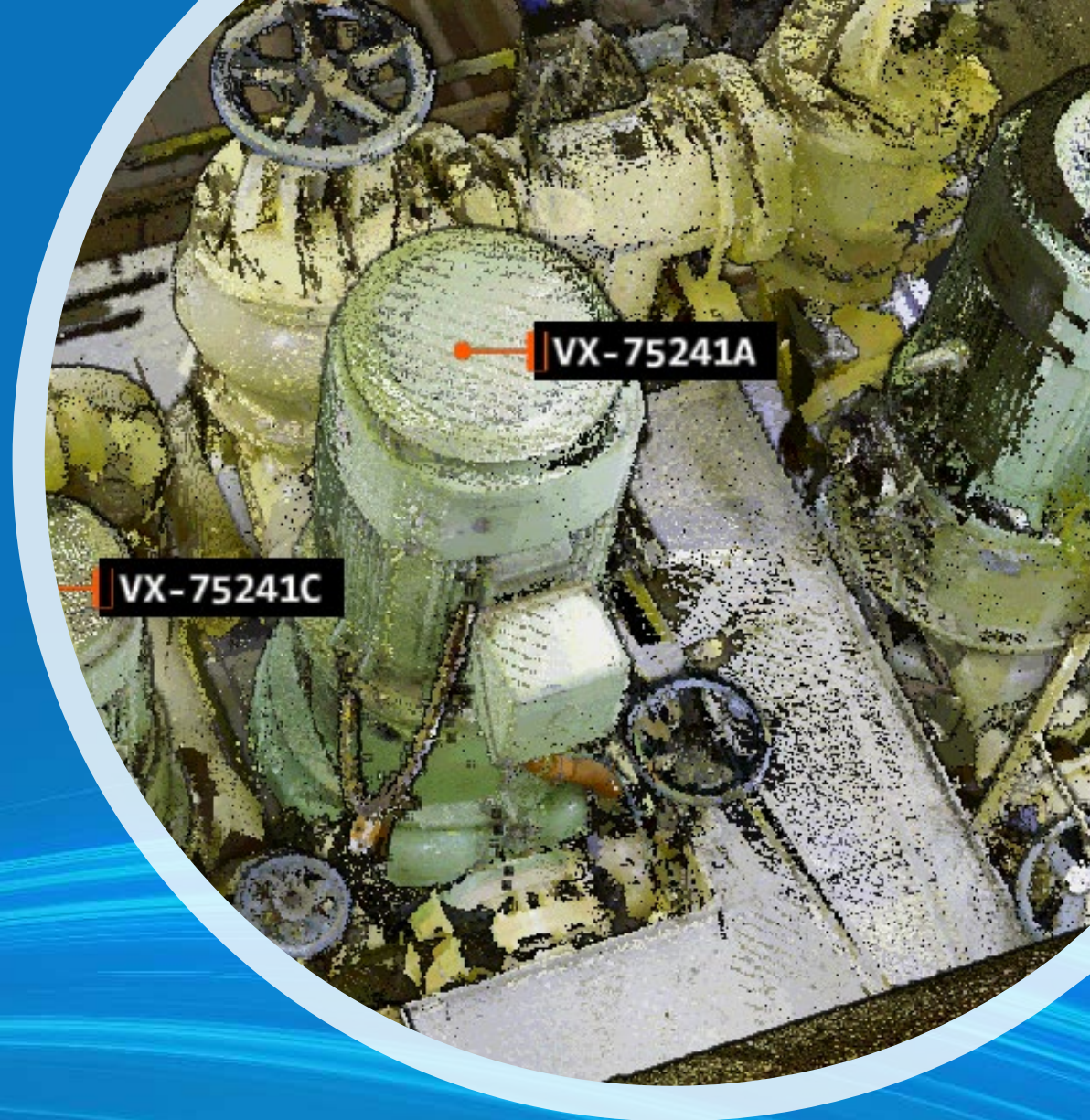
Confirm

Design

Simply *faster.*

Safer Operations

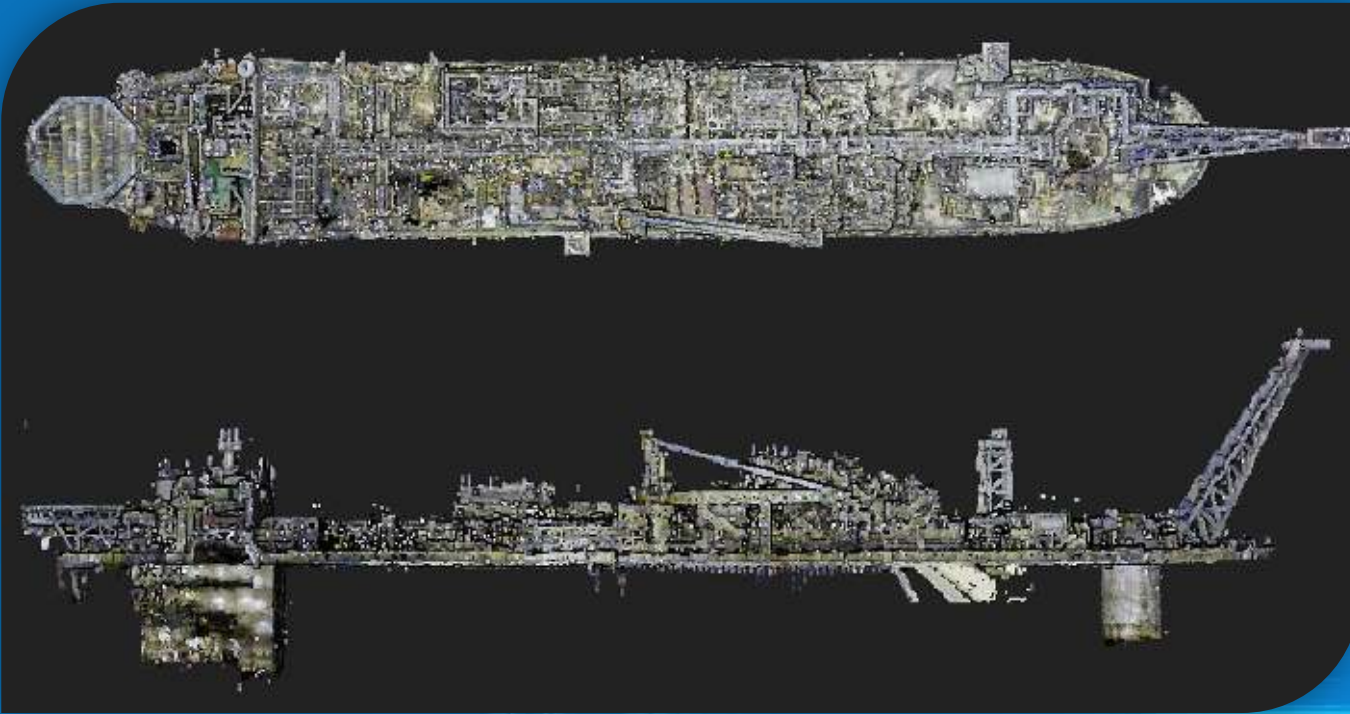
- Through using Pointerra3D, asset location and information can be confirmed where duplicate equipment exist.
- Remove the risk of works being completed on the wrong fixed plant through exploring the 3D world and asset tagging and identification.
- Before works begin, work crews can navigate the environment and determine risks present options as well as improving efficiency



Simply *faster*.



Size is no Issue

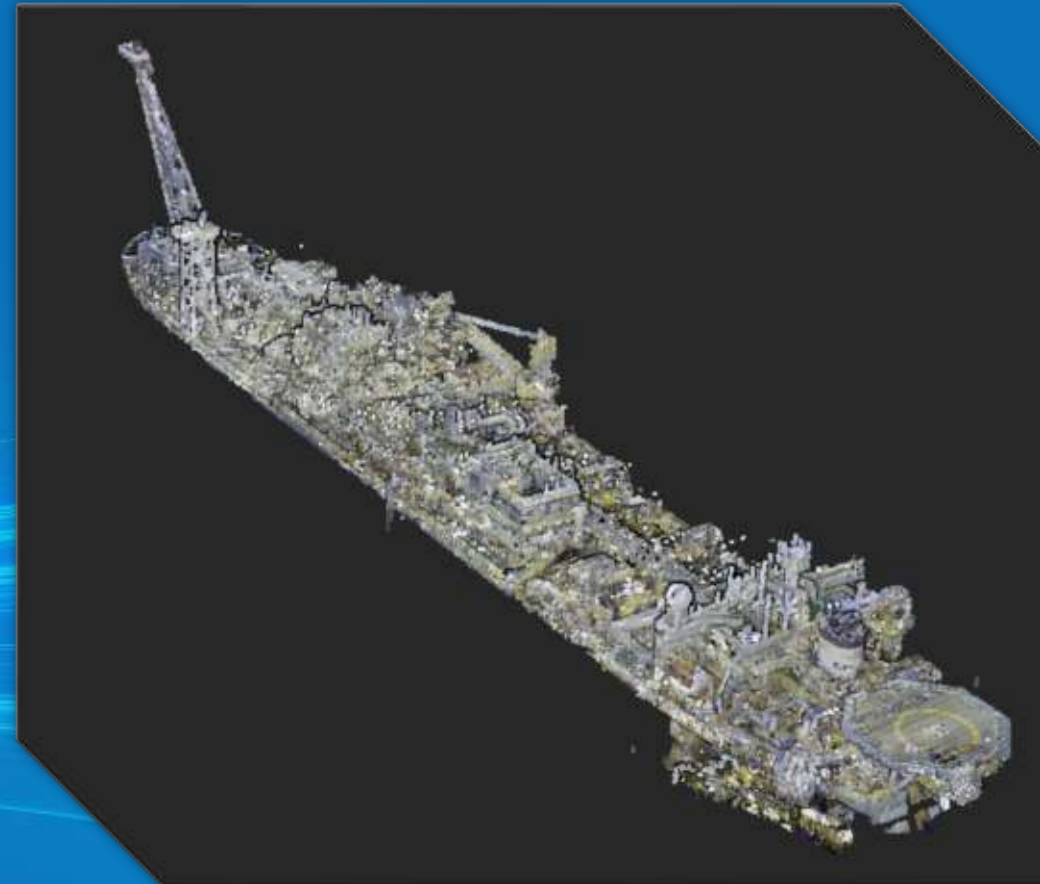


- Pointerra allows for huge datasets to be navigated by every user of a business without the need for high end IT CapEX
- Digital facility size is only limited by your physical facility size
- From tank farms to an entire gulf of offshore facilities Pointerra is ready



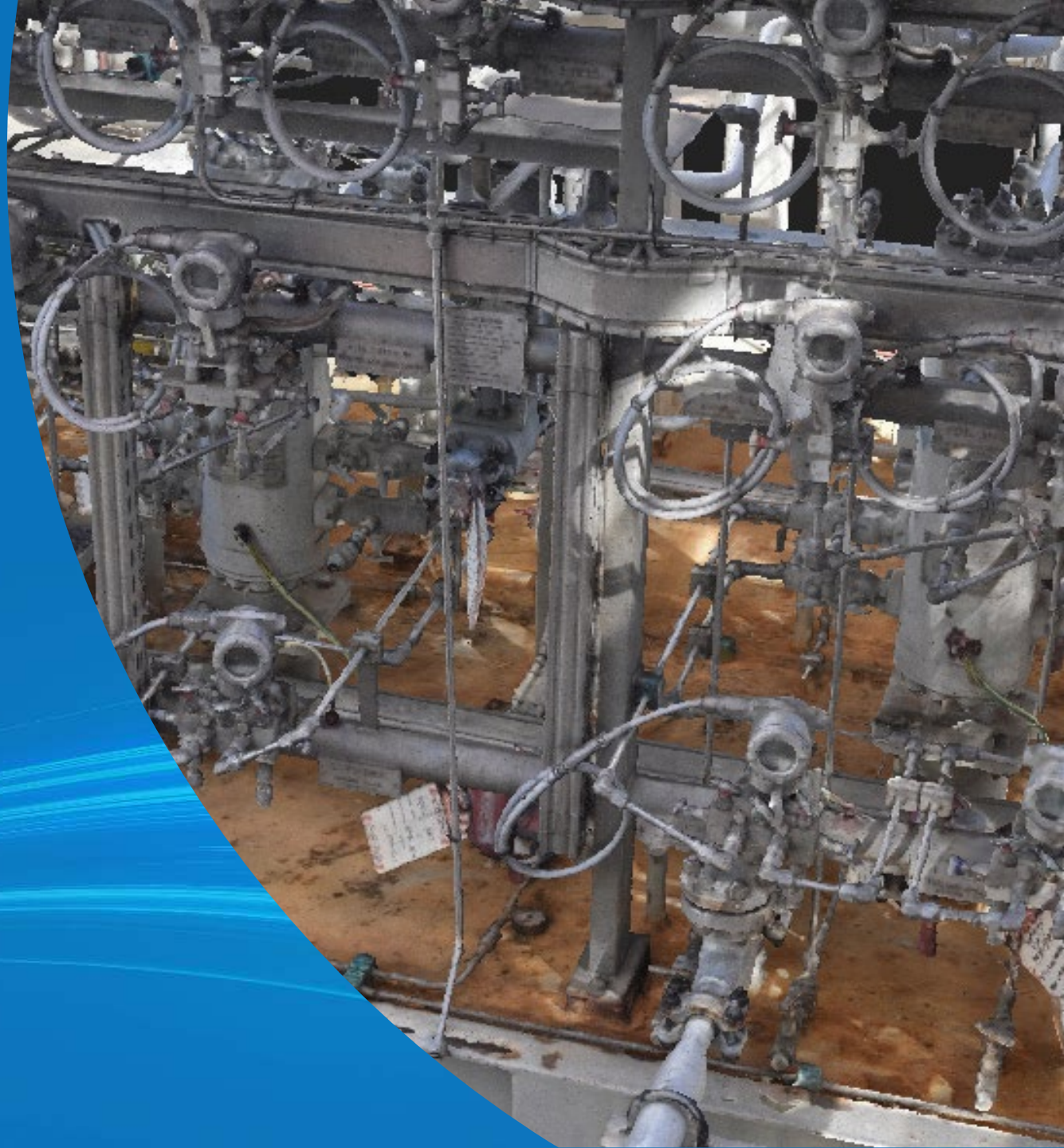
Navigate traditionally by stepping into a scan

- Pointerra generates spherical views like street view for easy navigation
- Collaborative space that allows for the mark up "Point of Interest", "Bookmarks" and measure what you need from the traditional perspective



Summary

- Through the centralization of 3D reality data and other geospatial information, brownfield asset maintenance can be drastically optimized
- Collaboration between vendors, designers and operators can be achieved in real time and with tangible results
- New designs can be trialed digitally and reviewed by key stake holders.
- Through clear visualization of the site environment, risks can be minimized if not mitigated when decisions need to be made fast!





Pointerra

Simply *faster.*

Contact Details:

Stuart Buckett

Email: stuart.buckett@pointerra.com

Mobile: +61420473641